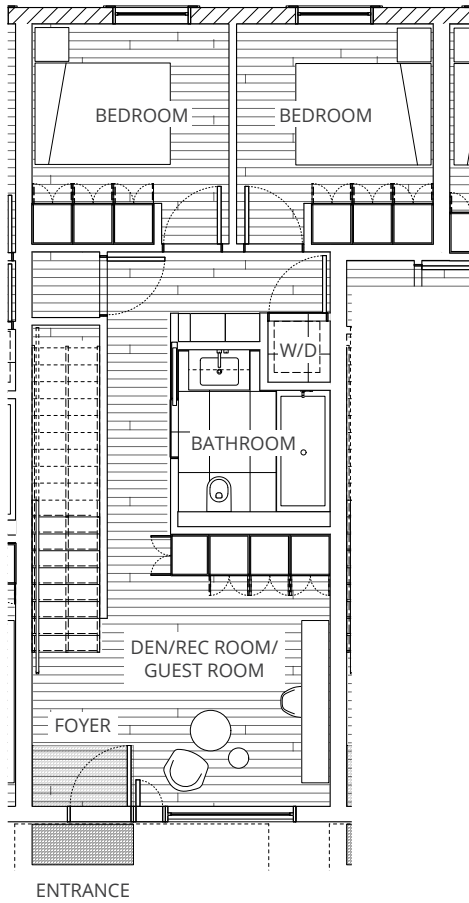


UNIT 3

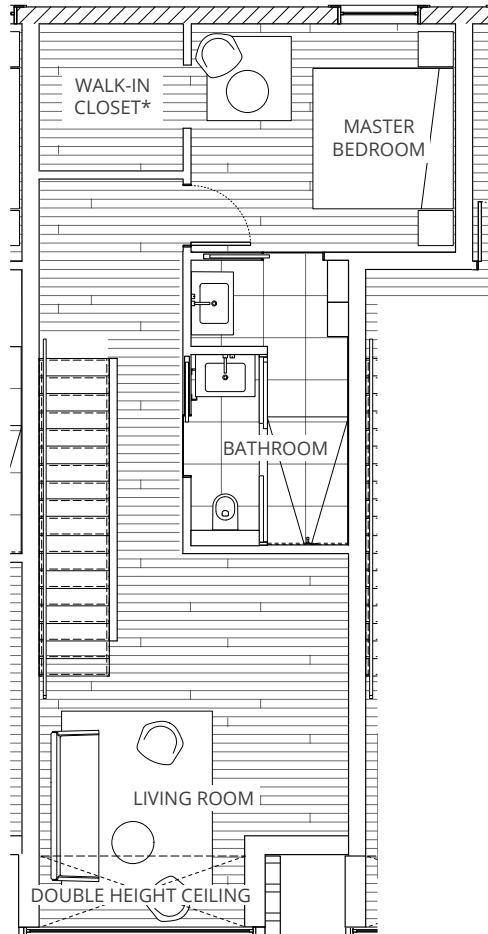
3 Bedrooms + Den, 2.5 Bathrooms

Turners
DAIRY

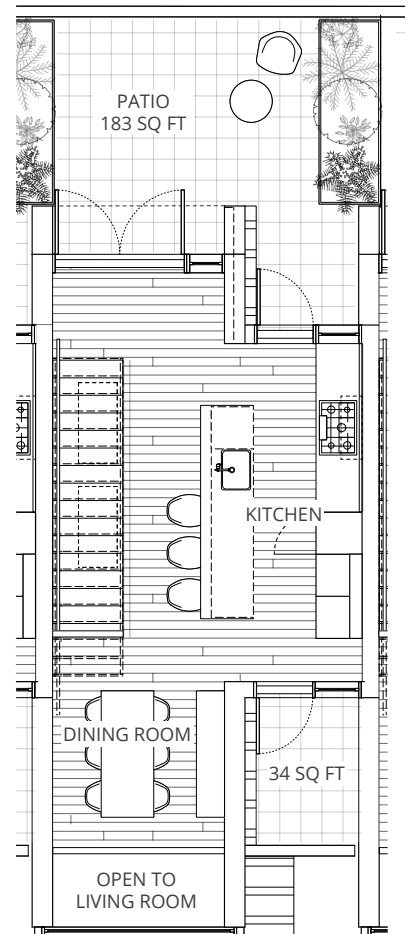
GROUND FLOOR



SECOND FLOOR



THIRD FLOOR



COURTYARD

INTERIOR SPACE = 1804 SQ FT
EXTERIOR SPACE = 217 SQ FT

TOTAL LIVING SPACE = 2021 SQ FT

*Optional Upgrade

