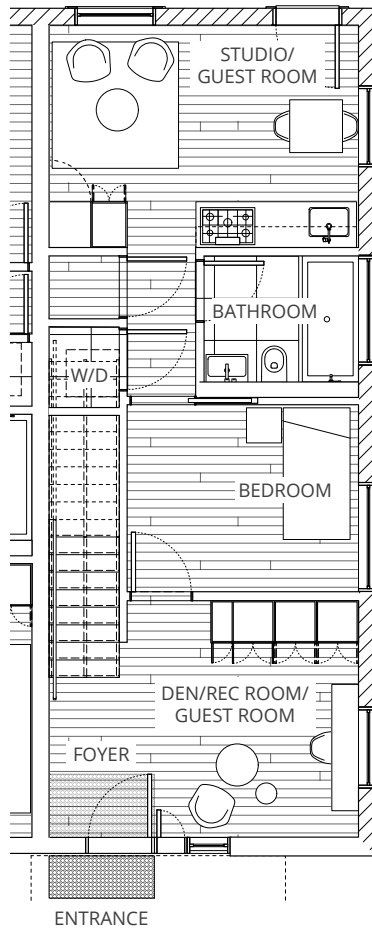


# UNIT 5

3 Bedrooms + Den, 2 Bathrooms

Turners  
DAIRY

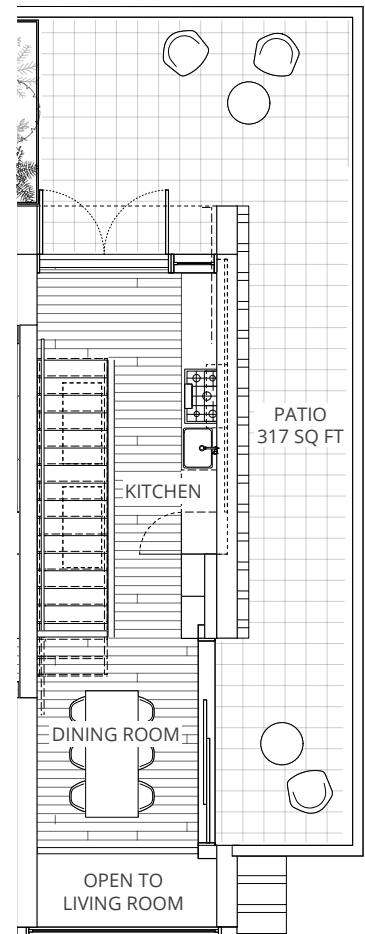
GROUND FLOOR



SECOND FLOOR



THIRD FLOOR



COURTYARD

INTERIOR SPACE = 1586 SQ FT  
EXTERIOR SPACE = 317 SQ FT

TOTAL LIVING SPACE = 1903 SQ FT

