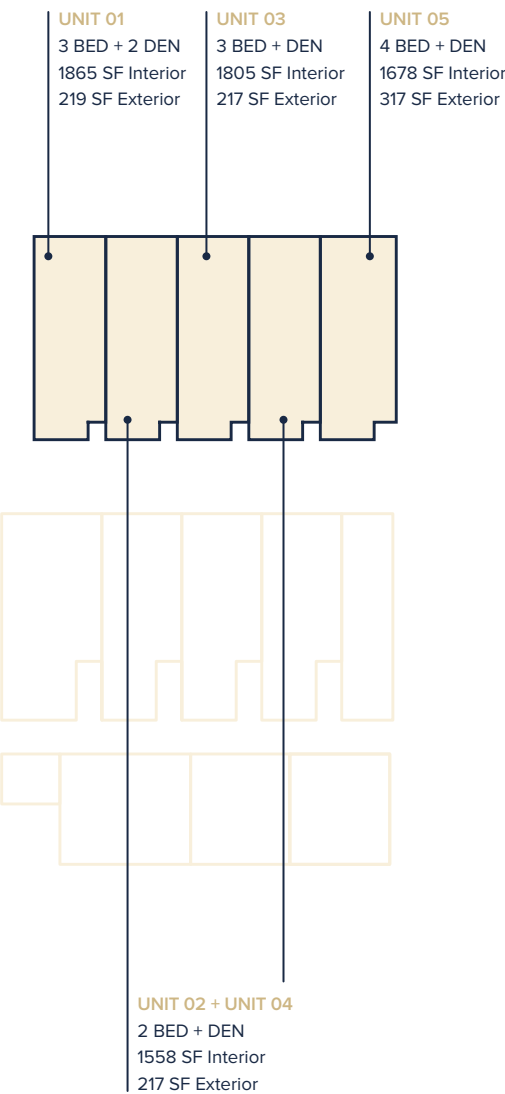
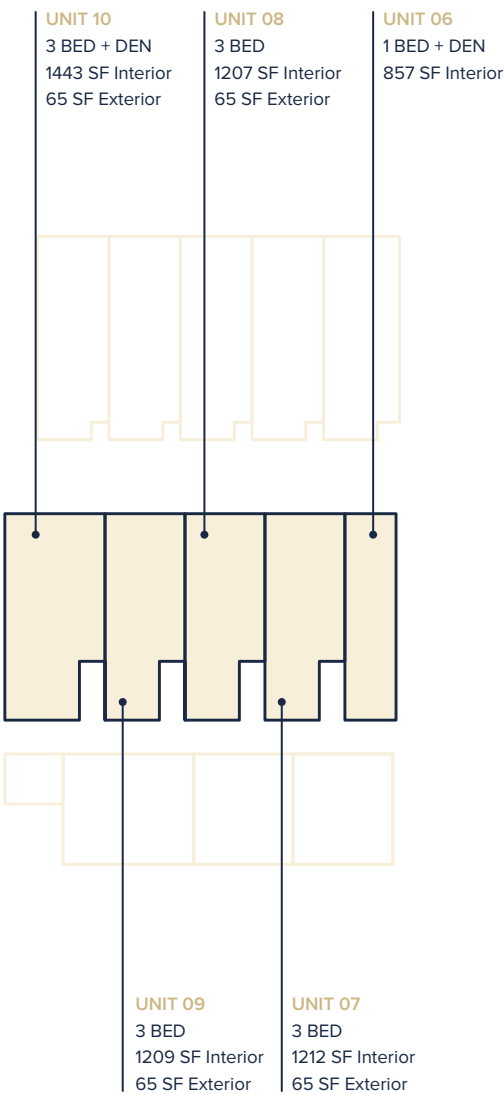


# FLOORPLATES

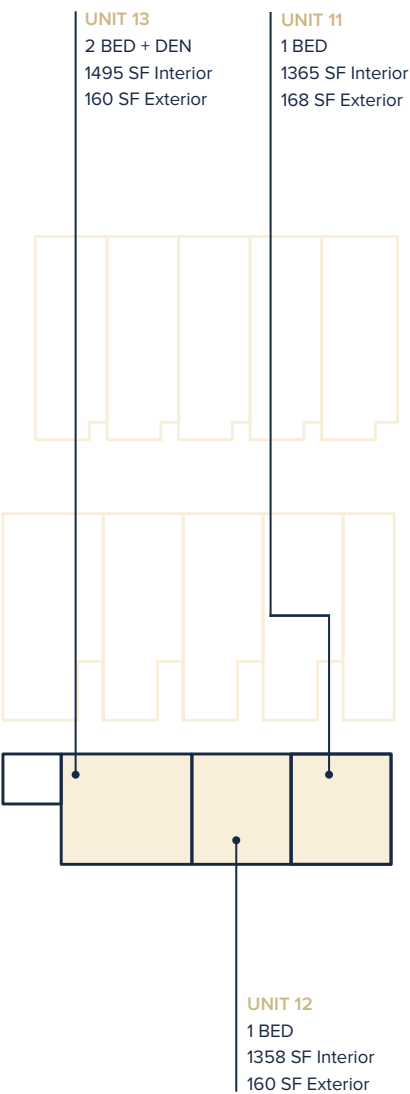
## THE DAIRY



## THE STABLE



## THE WAREHOUSE



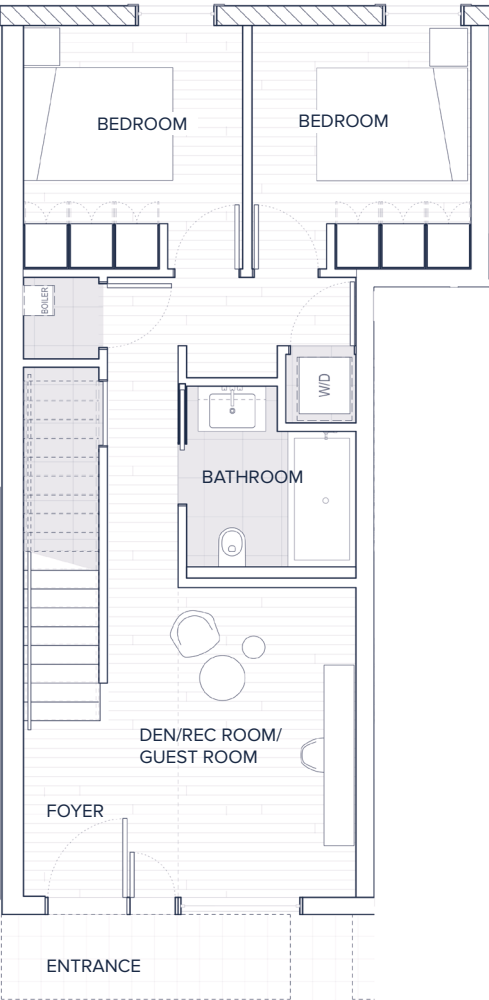
Dimensions, sizes, specifications, layouts and materials are approximate only and subject to change without notice. E&OE.

# UNIT 01

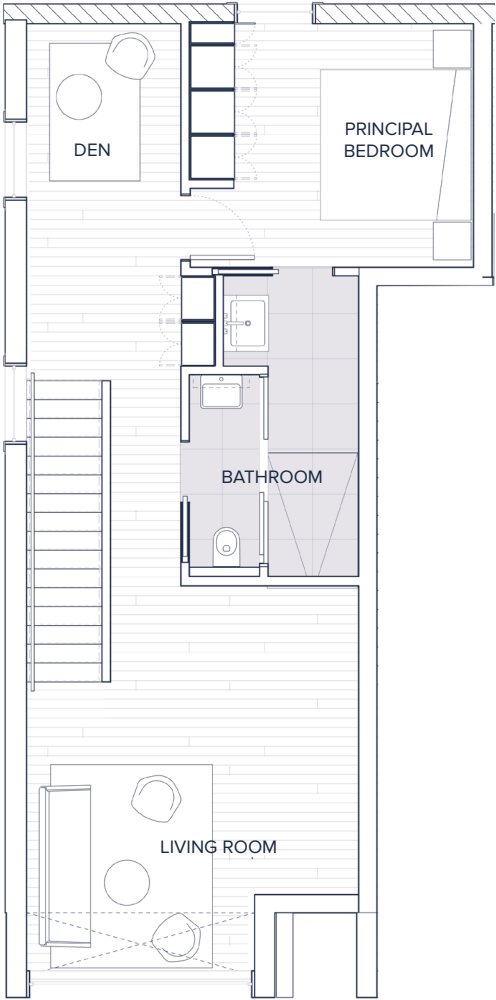
3 BED + 2 DENS/FLEX SPACE | 2 BATH

INTERIOR	1865 SQ FT
EXTERIOR	219 SQ FT
TOTAL	2084 SQ FT

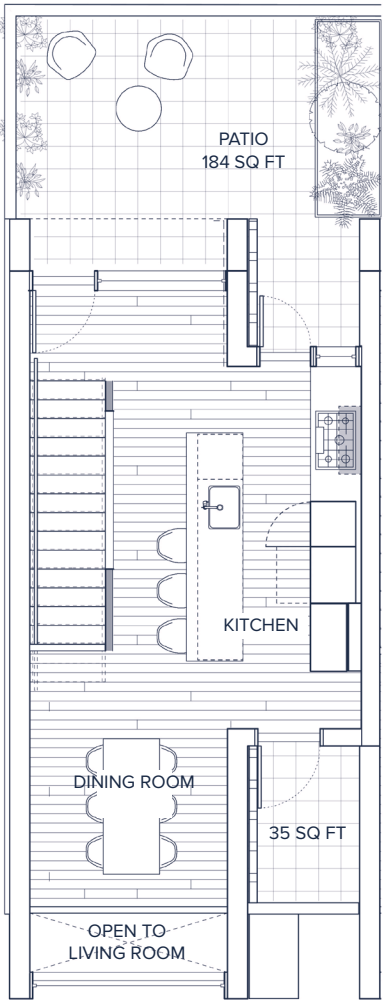
GROUND FLOOR



SECOND FLOOR

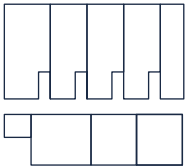


THIRD FLOOR



COURTYARD

## THE DAIRY



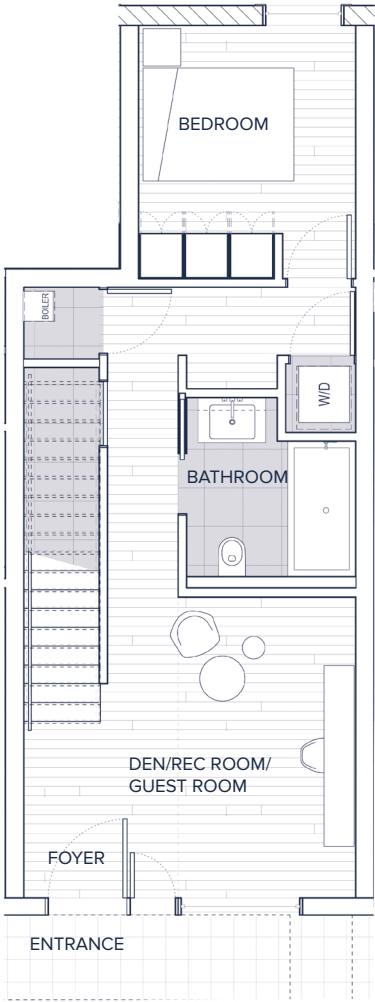
Dimensions, sizes, specifications, layouts and materials are approximate only and subject to change without notice. E&OE.

# UNITS 02 + 04

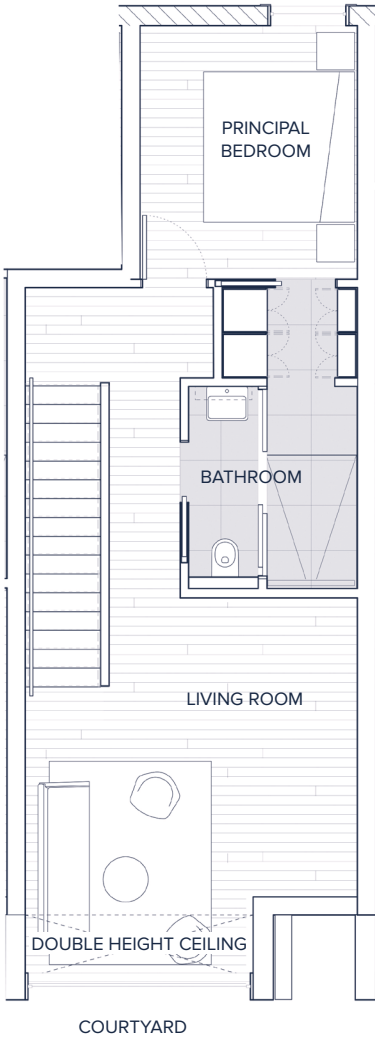
2 BED + DEN | 2 BATH

INTERIOR	1558 SQ FT
EXTERIOR	217 SQ FT
TOTAL	1775 SQ FT

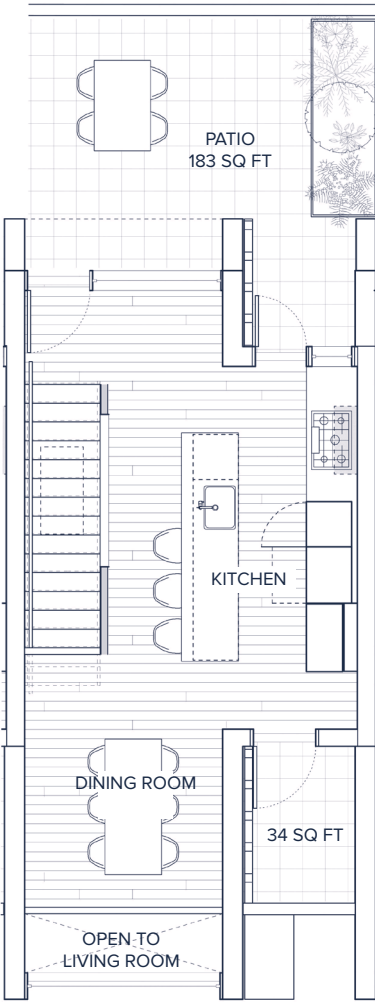
GROUND FLOOR



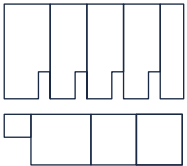
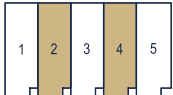
SECOND FLOOR



THIRD FLOOR



THE DAIRY



Dimensions, sizes, specifications, layouts and materials are approximate only and subject to change without notice. E&OE.

# UNIT 03

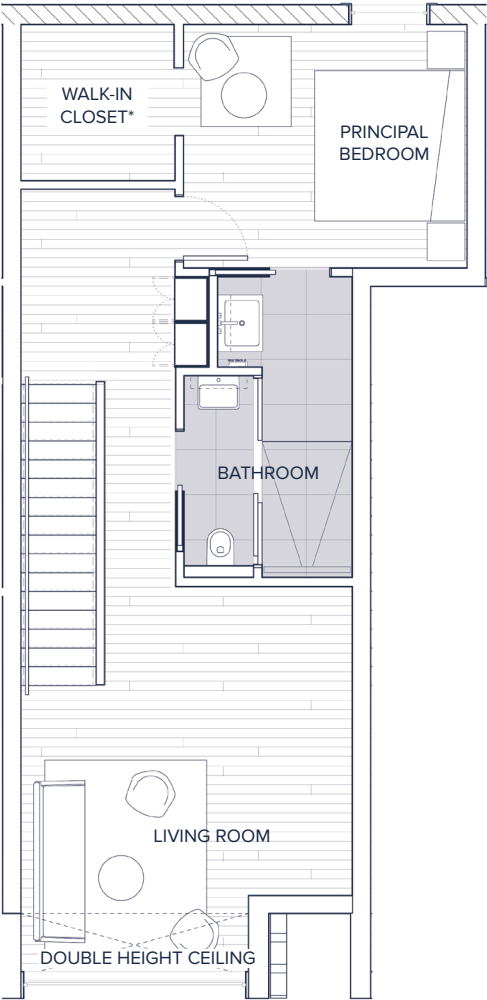
3 BED + DEN | 2 BATH

INTERIOR	1805 SQ FT
EXTERIOR	217 SQ FT
TOTAL	2022 SQ FT

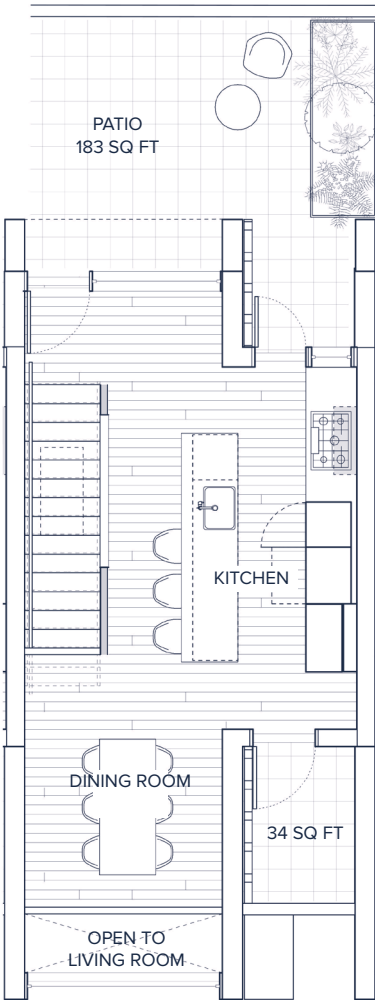
GROUND FLOOR



SECOND FLOOR



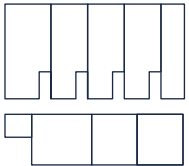
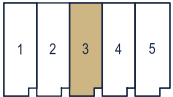
THIRD FLOOR



COURTYARD

\* Optional upgrade

## THE DAIRY



Dimensions, sizes, specifications, layouts and materials are approximate only and subject to change without notice. E&OE.

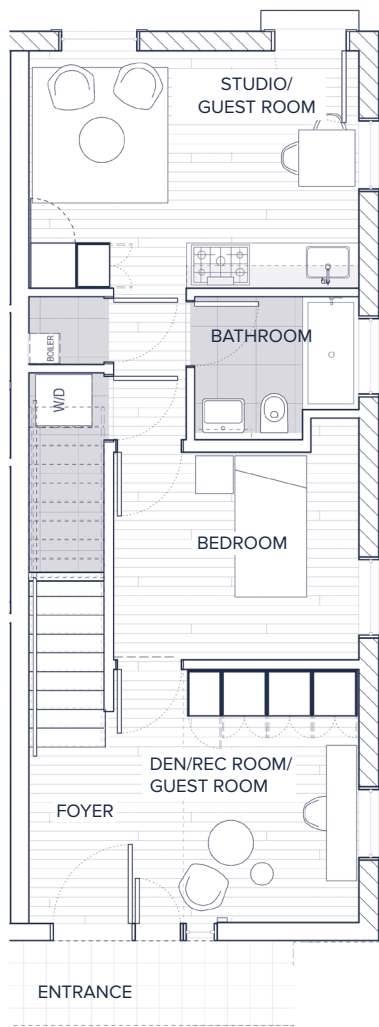
# UNIT 05

4 BED + DEN | 2 BATH

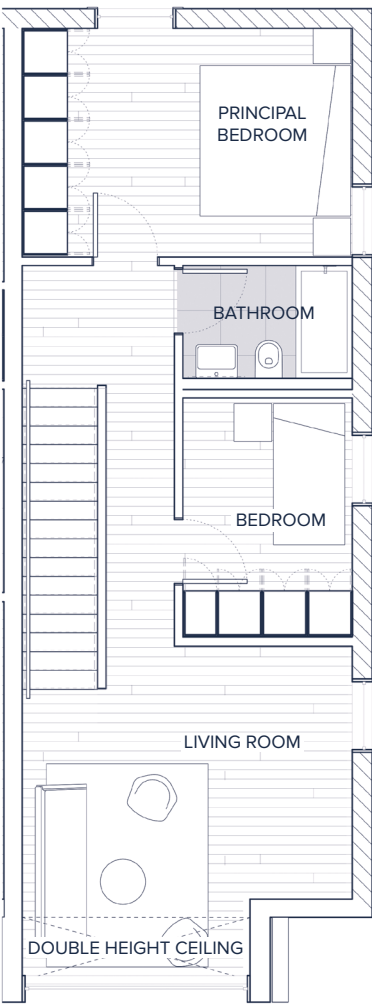
ABILITY TO LOCK OFF A STUDIO SUITE

INTERIOR	1678 SQ FT
EXTERIOR	317 SQ FT
TOTAL	1995 SQ FT

GROUND FLOOR

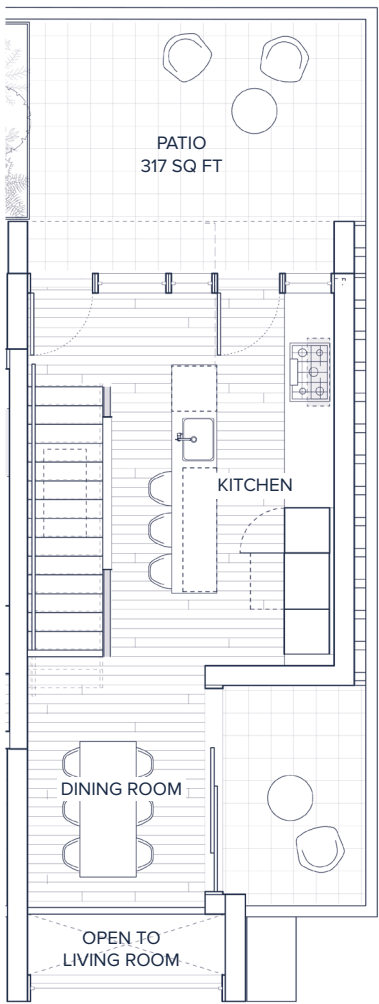


SECOND FLOOR

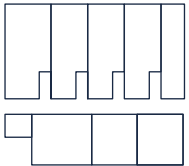


COURTYARD

THIRD FLOOR



THE DAIRY



Dimensions, sizes, specifications, layouts and materials are approximate only and subject to change without notice. E&OE.

# UNIT 06

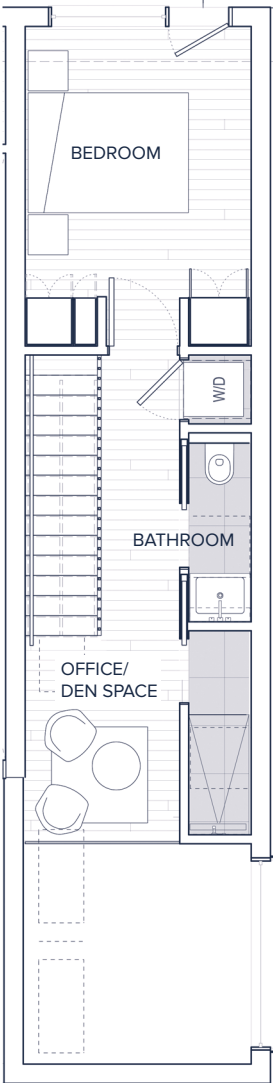
1 BED + DEN | 1 BATH

TOTAL 857 SQ FT

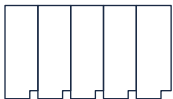
## GROUND FLOOR

## SECOND FLOOR

COURTYARD



## THE STABLE



Dimensions, sizes, specifications, layouts and materials are approximate only and subject to change without notice. E&OE.

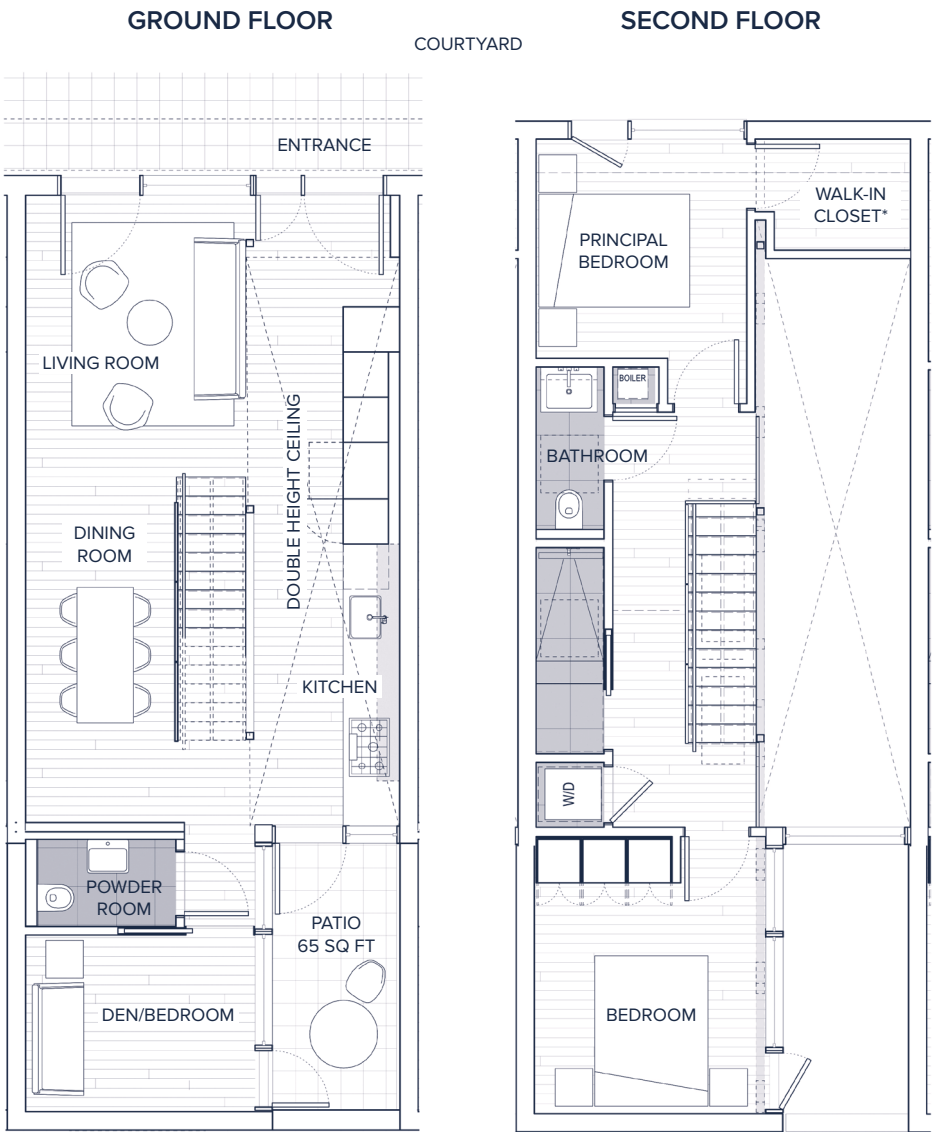
# UNIT 07, 08 + 09

3 BED | 1.5 BATH

07 INTERIOR	1212 SQ FT
EXTERIOR	65 SQ FT
TOTAL	1277 SQ FT

08 INTERIOR	1207 SQ FT
EXTERIOR	65 SQ FT
TOTAL	1272 SQ FT

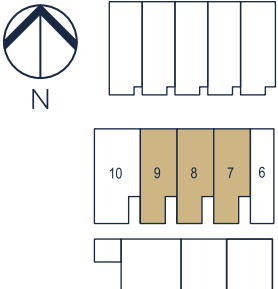
09 INTERIOR	1209 SQ FT
EXTERIOR	65 SQ FT
TOTAL	1274 SQ FT



\* Optional upgrade



## THE STABLE



Dimensions, sizes, specifications, layouts and materials are approximate only and subject to change without notice. E&OE.

# UNIT 10

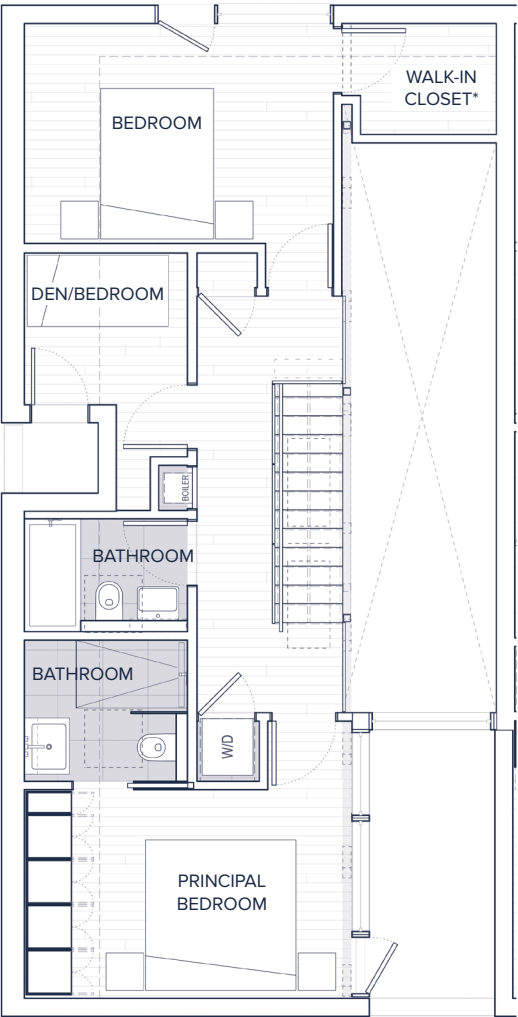
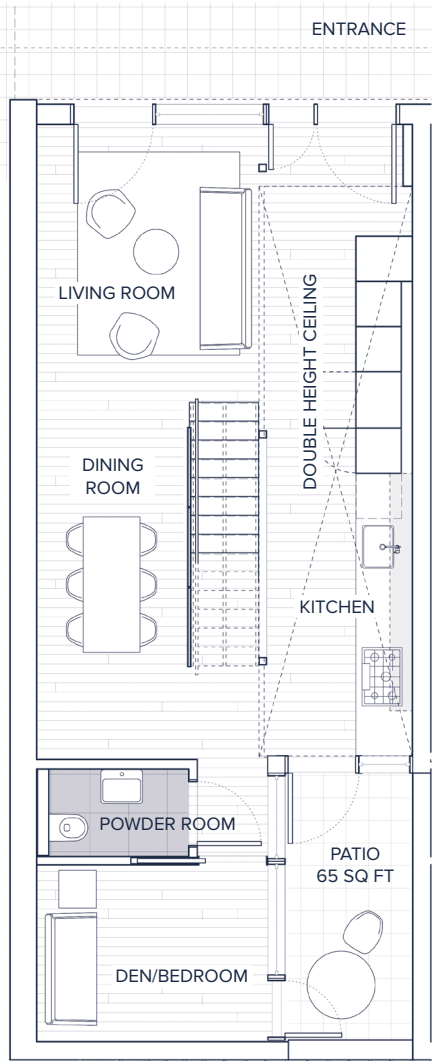
3 BED + DEN | 2.5 BATH

INTERIOR	1443 SQ FT
EXTERIOR	65 SQ FT
TOTAL	1508 SQ FT

GROUND FLOOR

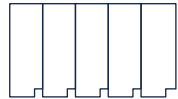
SECOND FLOOR

COURTYARD



\* Optional upgrade

THE STABLE



Dimensions, sizes, specifications, layouts and materials are approximate only and subject to change without notice. E&OE.



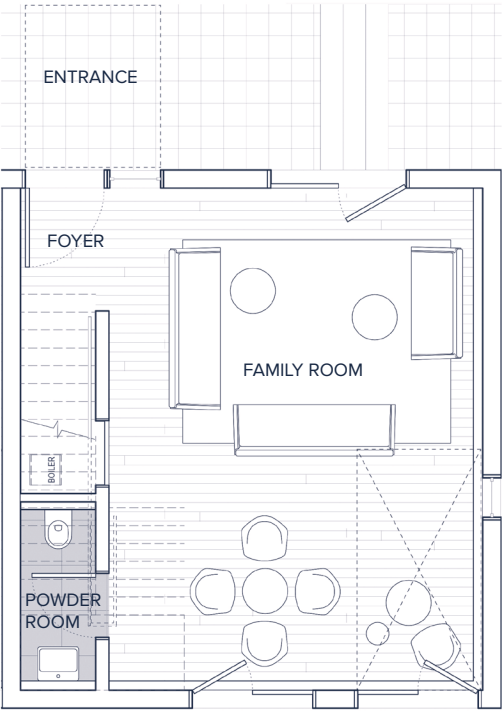
# UNIT 11 + 12

1 BED | 1.5 BATH  
PLUS MAIN FLOOR FLEX SPACE

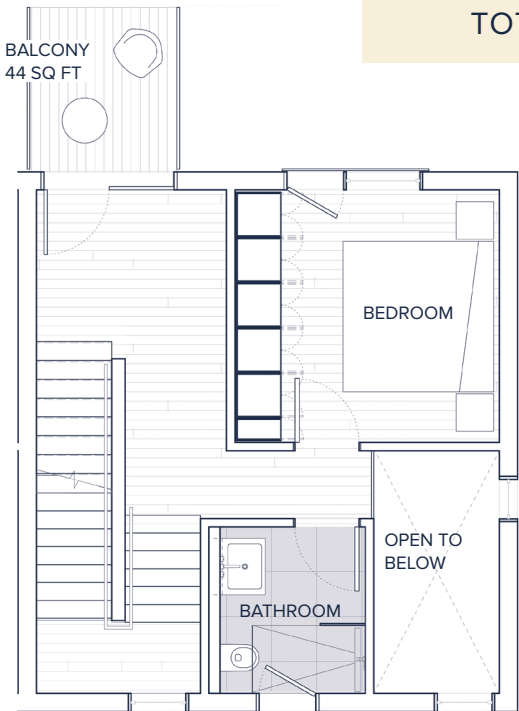
11 INTERIOR	1365 SQ FT
EXTERIOR	168 SQ FT
TOTAL	1533 SQ FT

12 INTERIOR	1358 SQ FT
EXTERIOR	160 SQ FT
TOTAL	1518 SQ FT

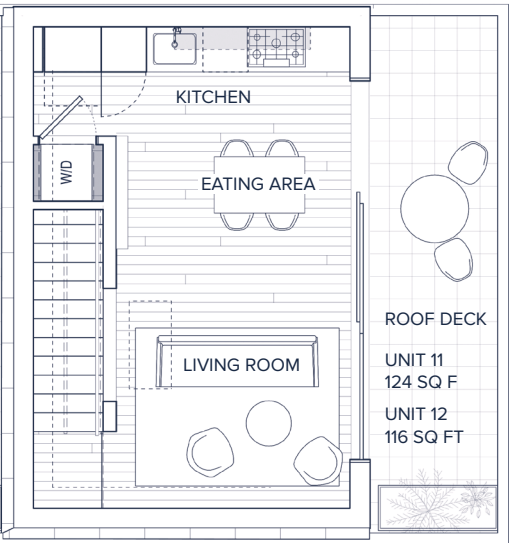
## GROUND FLOOR



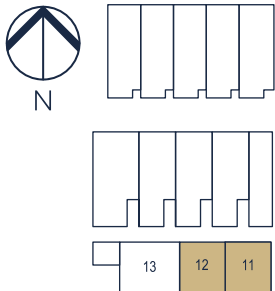
## SECOND FLOOR



## THIRD FLOOR



## THE WAREHOUSE

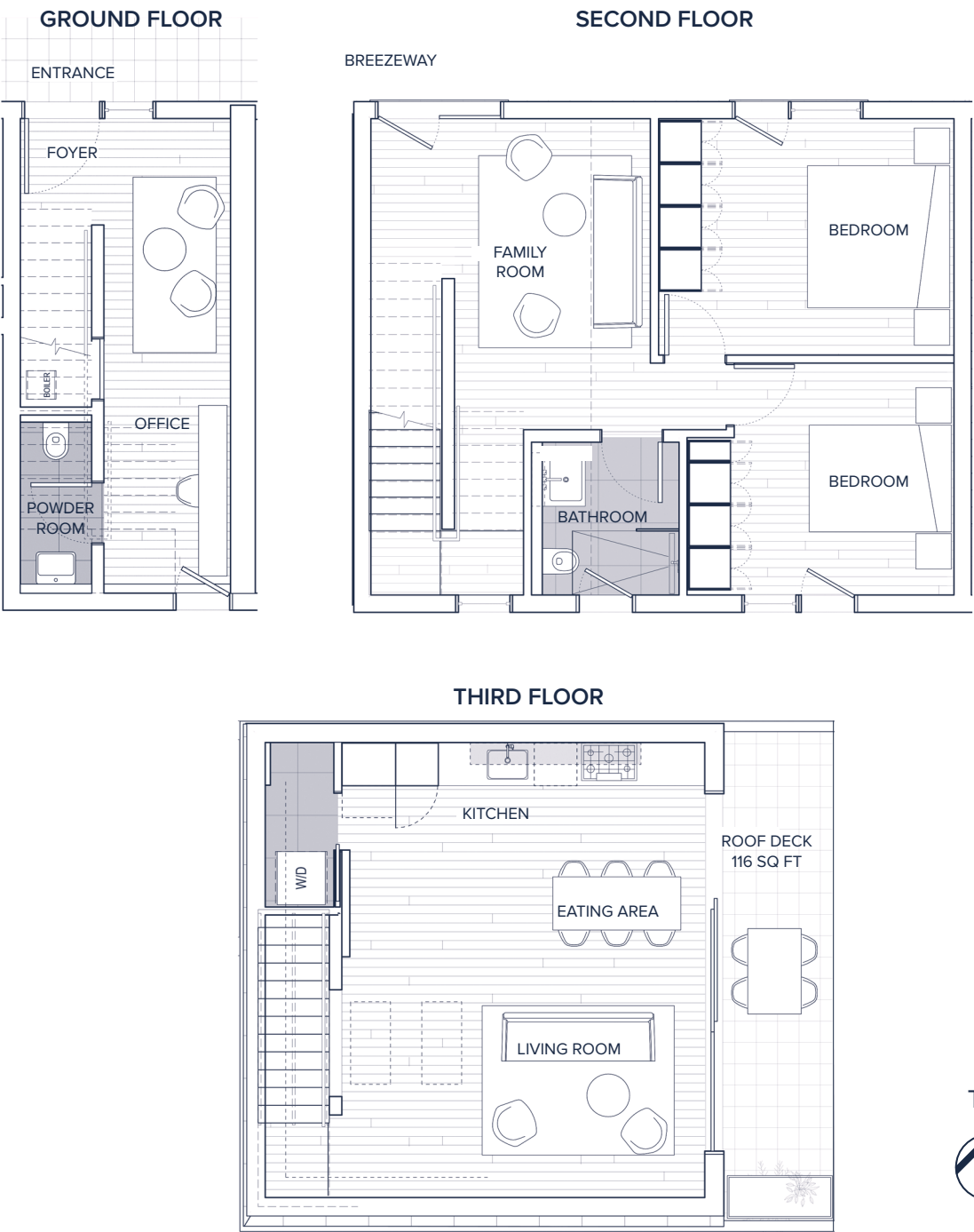


Dimensions, sizes, specifications, layouts and materials are approximate only and subject to change without notice. E&OE.

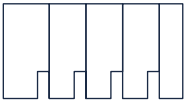
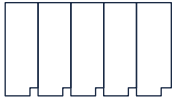
# UNIT 13

2 BED + DEN | 1.5 BATH  
PLUS SECOND FLOOR FLEX SPACE

INTERIOR	1495 SQ FT
EXTERIOR	160 SQ FT
TOTAL	1655 SQ FT



## THE WAREHOUSE



	13	12	11
--	----	----	----



Dimensions, sizes, specifications, layouts and materials are approximate only and subject to change without notice. E&OE.