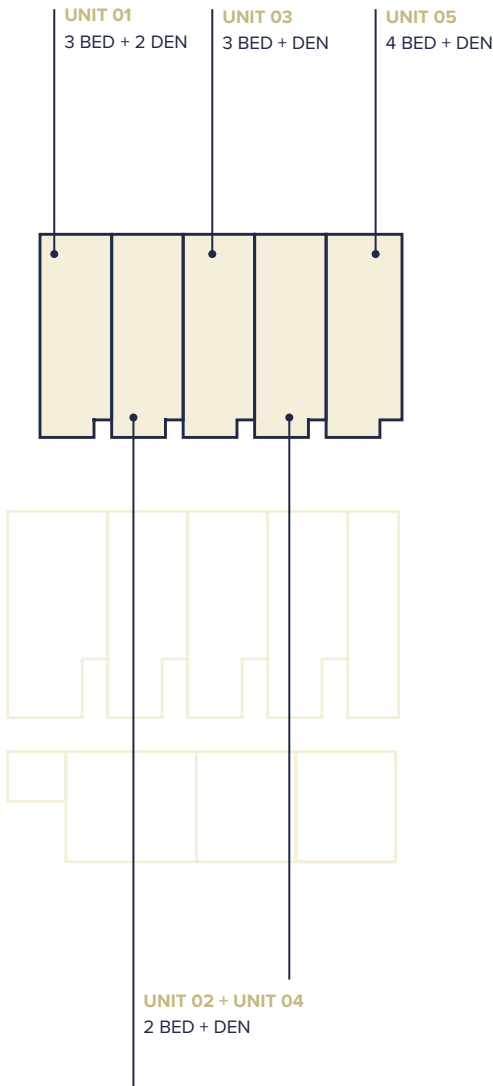
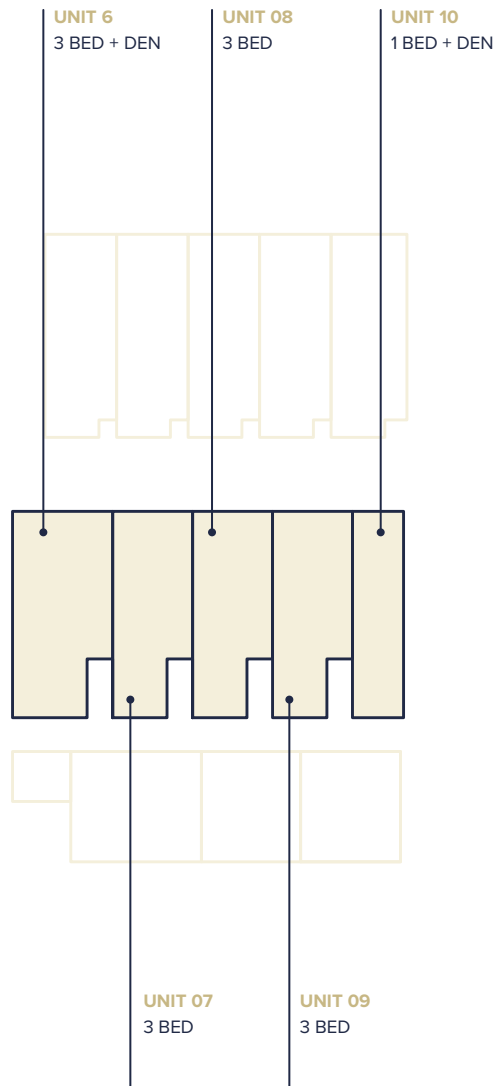


# FLOORPLATES

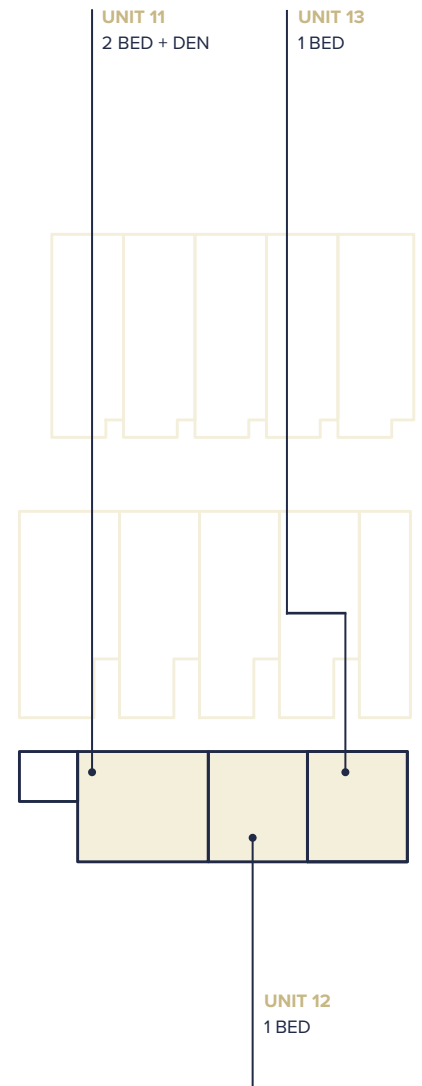
## THE DAIRY



## THE STABLE



## THE WAREHOUSE



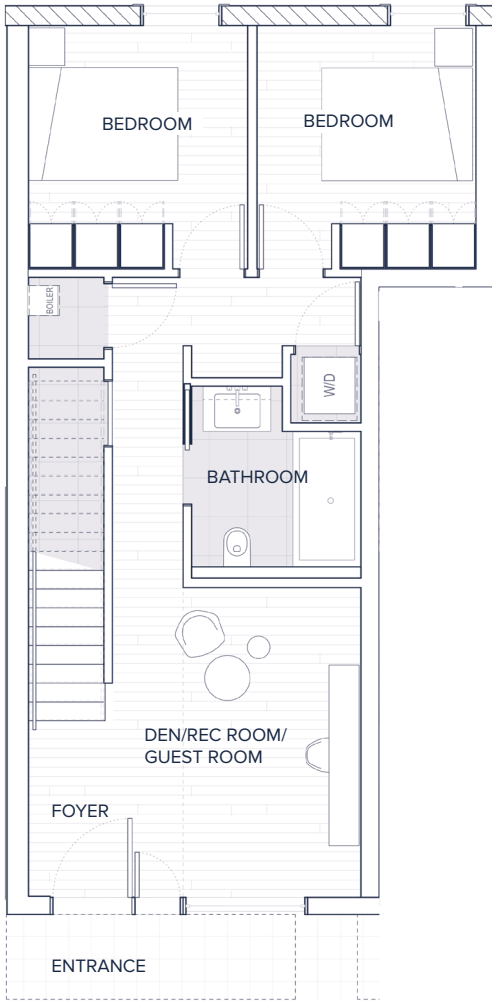
Dimensions, sizes, specifications, layouts and materials are approximate only and subject to change without notice. E&OE.

# UNIT 01

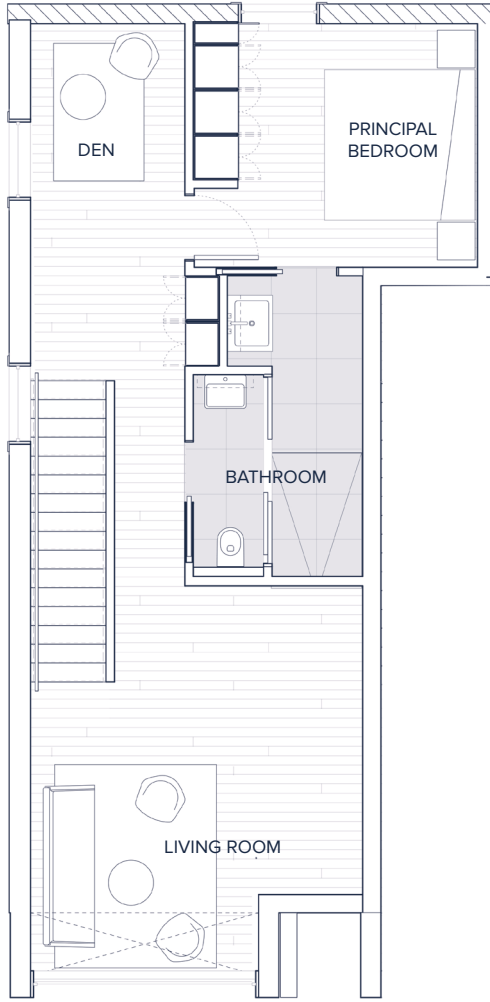
3 BED + 2 DENS/FLEX SPACE | 2 BATH

INTERIOR	1865 SQ FT
EXTERIOR	219 SQ FT
TOTAL	2084 SQ FT

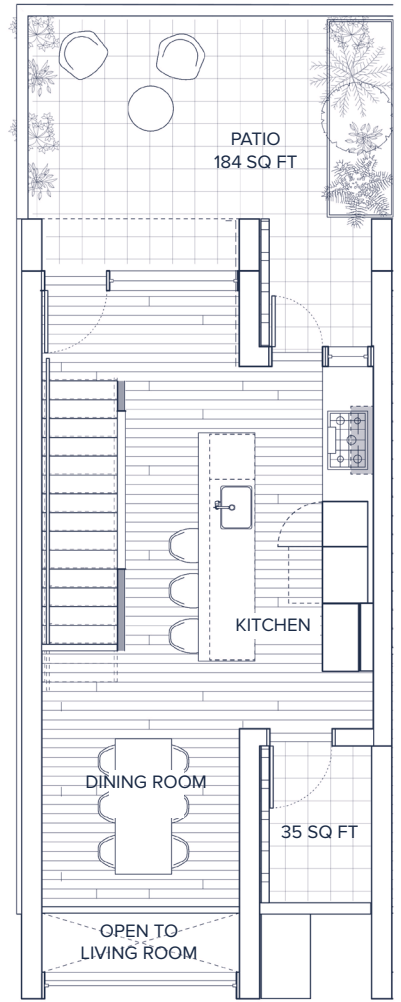
GROUND FLOOR



SECOND FLOOR

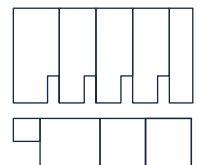


THIRD FLOOR



COURTYARD

THE DAIRY



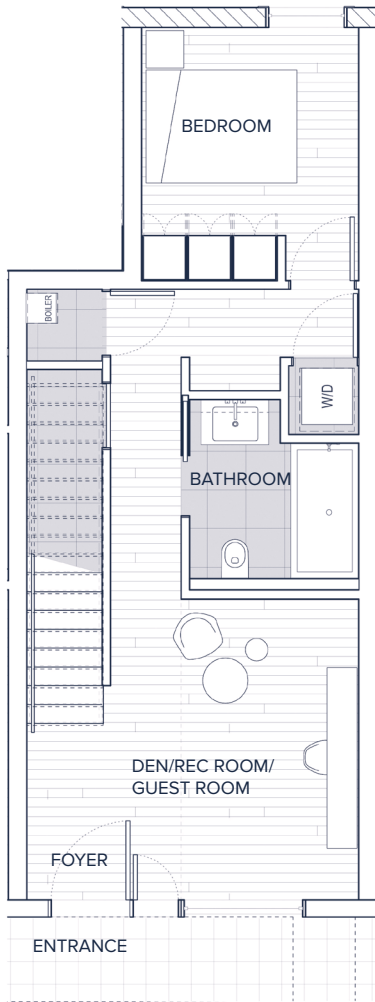
Dimensions, sizes, specifications, layouts and materials are approximate only and subject to change without notice. E&OE.

# UNITS 02 + 04

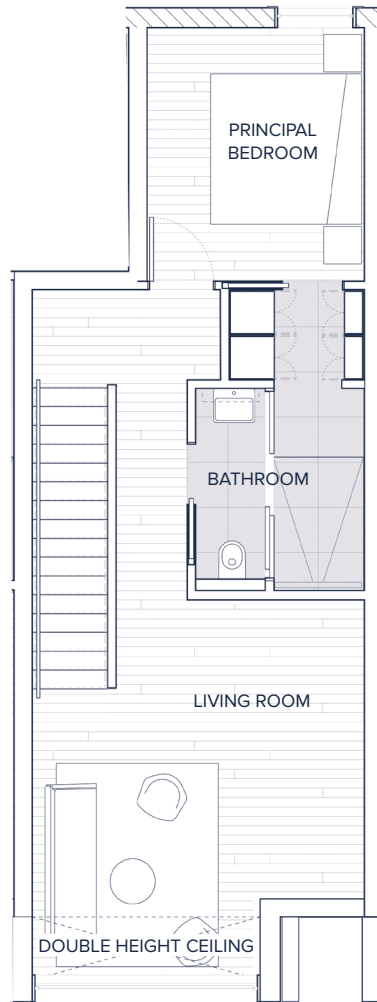
2 BED + DEN | 2 BATH

INTERIOR	1558 SQ FT
EXTERIOR	217 SQ FT
TOTAL	1775 SQ FT

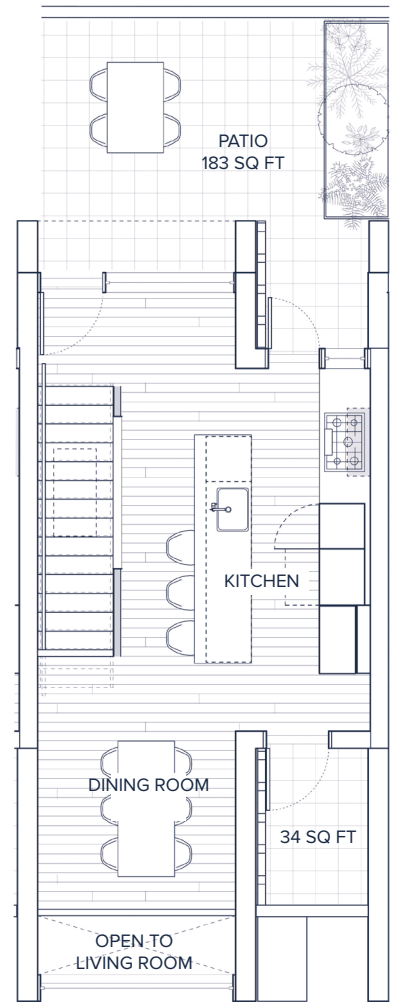
GROUND FLOOR



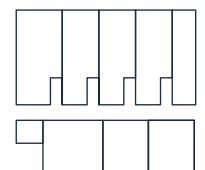
SECOND FLOOR



THIRD FLOOR



THE DAIRY



Dimensions, sizes, specifications, layouts and materials are approximate only and subject to change without notice. E&OE.

# UNIT 03

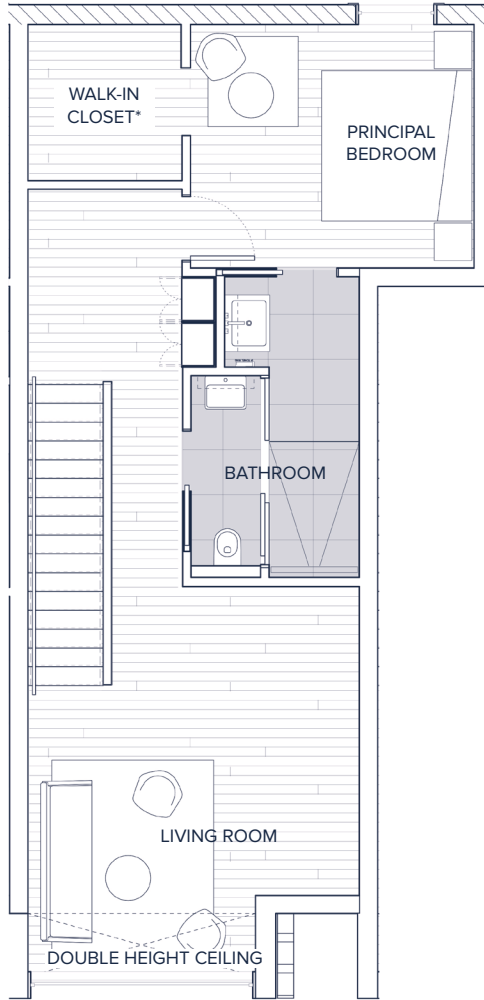
3 BED + DEN | 2 BATH

INTERIOR	1805 SQ FT
EXTERIOR	217 SQ FT
TOTAL	2022 SQ FT

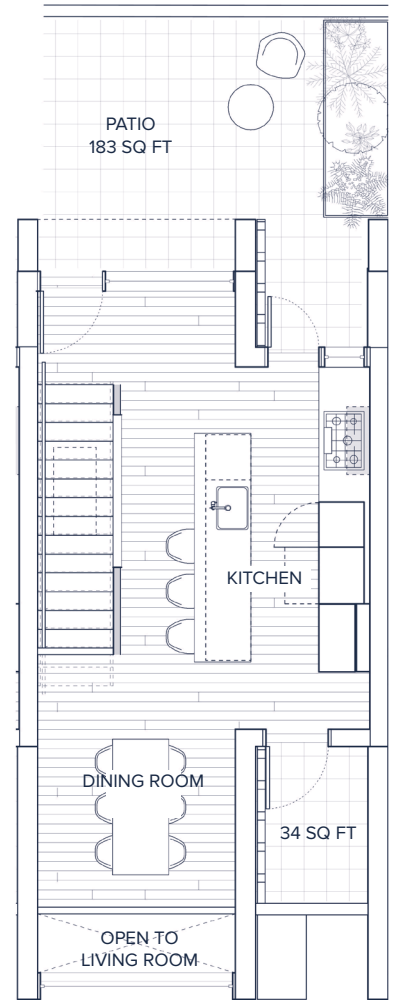
GROUND FLOOR



SECOND FLOOR



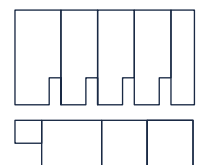
THIRD FLOOR



COURTYARD

\* Optional upgrade

## THE DAIRY



Dimensions, sizes, specifications, layouts and materials are approximate only and subject to change without notice. E&OE.

# UNIT 05

4 BED + DEN | 2 BATH

ABILITY TO LOCK OFF A STUDIO SUITE

INTERIOR	1678 SQ FT
EXTERIOR	317 SQ FT
TOTAL	1995 SQ FT

GROUND FLOOR

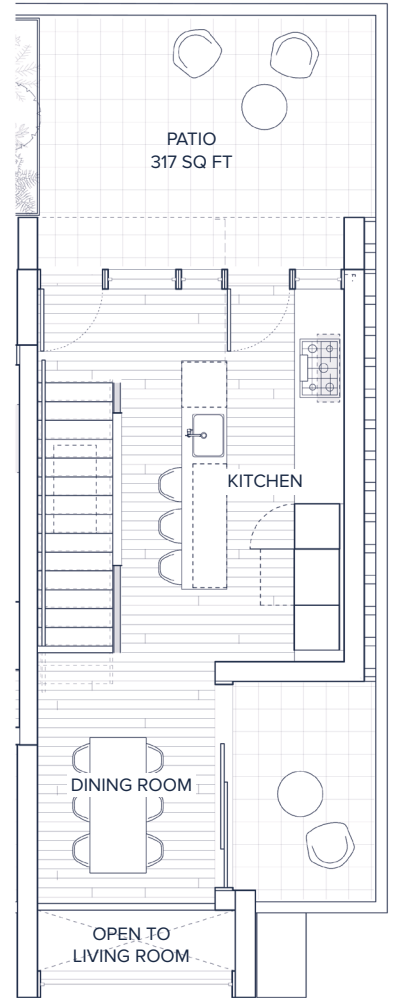


SECOND FLOOR

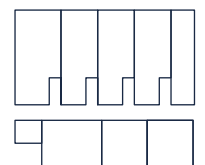


COURTYARD

THIRD FLOOR



## THE DAIRY



Dimensions, sizes, specifications, layouts and materials are approximate only and subject to change without notice. E&OE.

# UNIT 06

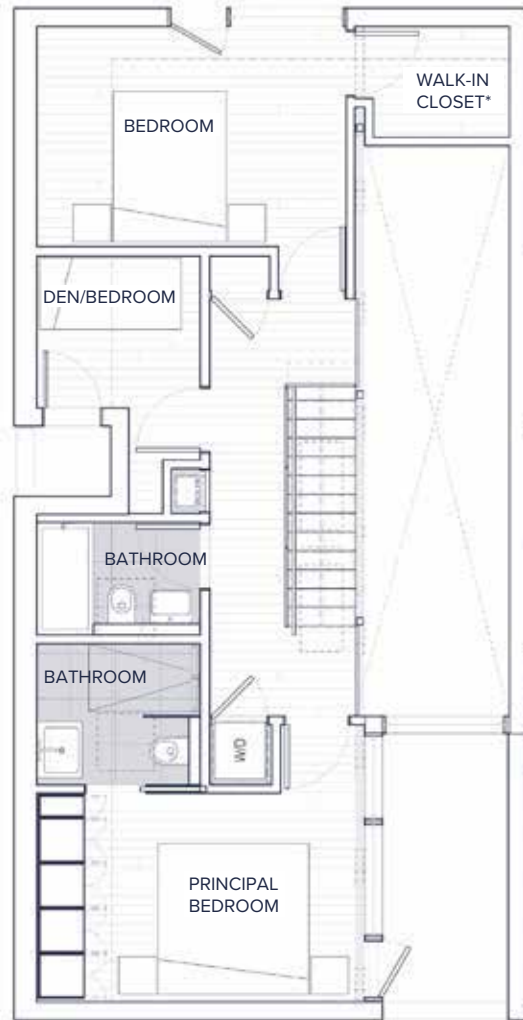
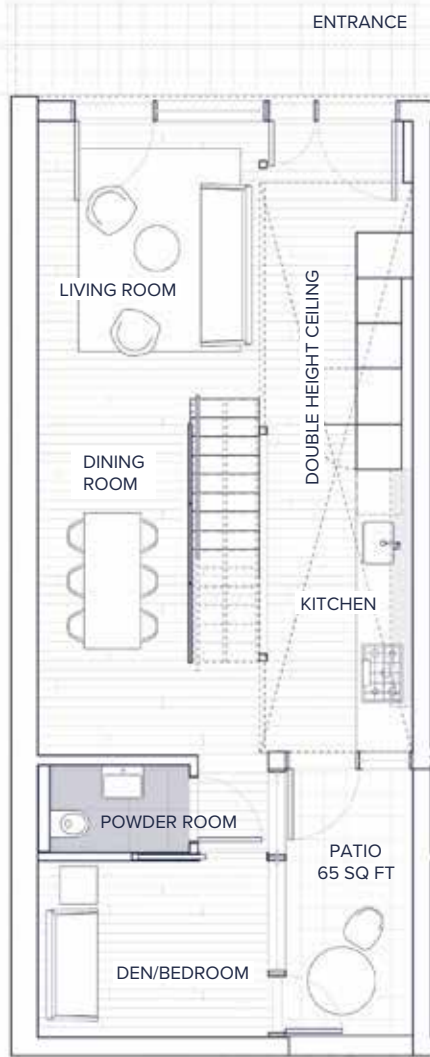
3 BED + DEN | 2.5 BATH

INTERIOR	1443 SQ FT
EXTERIOR	65 SQ FT
TOTAL	1508 SQ FT

## GROUND FLOOR

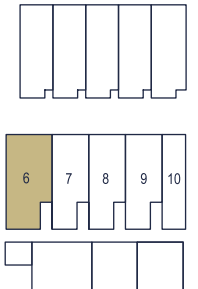
## SECOND FLOOR

COURTYARD



\* Optional upgrade

### THE STABLE



Dimensions, sizes, specifications, layouts and materials are approximate only and subject to change without notice. E&OE.

# UNIT 07, 08 + 09

3 BED | 1.5 BATH

07 INTERIOR	1209 SQ FT
EXTERIOR	65 SQ FT
TOTAL	1274 SQ FT

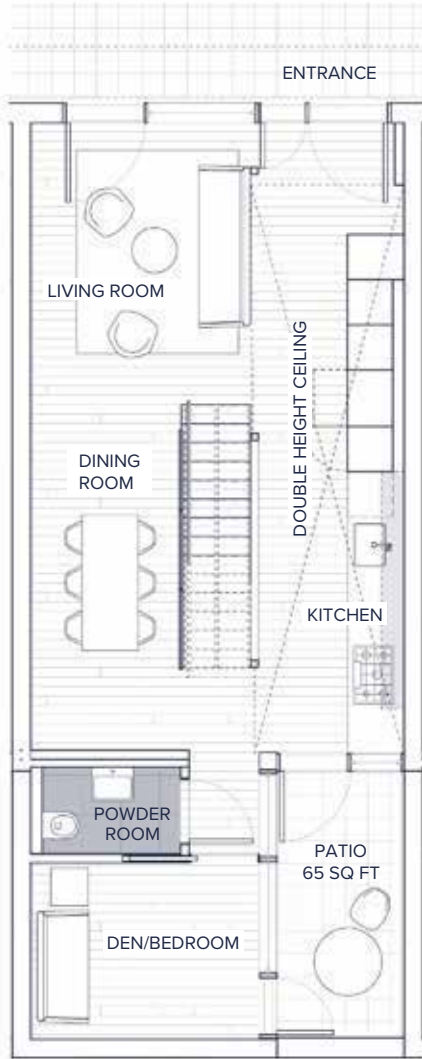
08 INTERIOR	1207 SQ FT
EXTERIOR	65 SQ FT
TOTAL	1272 SQ FT

09 INTERIOR	1212 SQ FT
EXTERIOR	65 SQ FT
TOTAL	1277 SQ FT

## GROUND FLOOR

## SECOND FLOOR

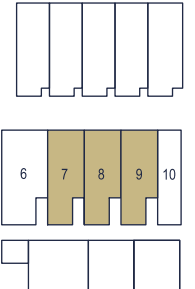
COURTYARD



\* Optional upgrade



## THE STABLE



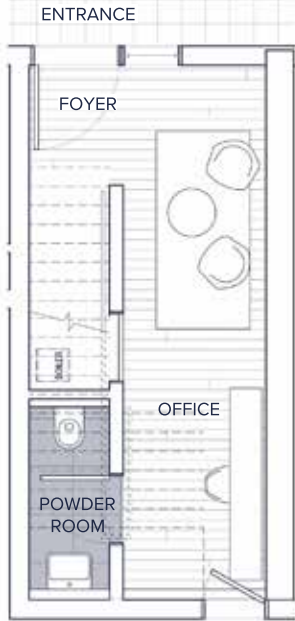
Dimensions, sizes, specifications, layouts and materials are approximate only and subject to change without notice. E&OE.

# UNIT 11

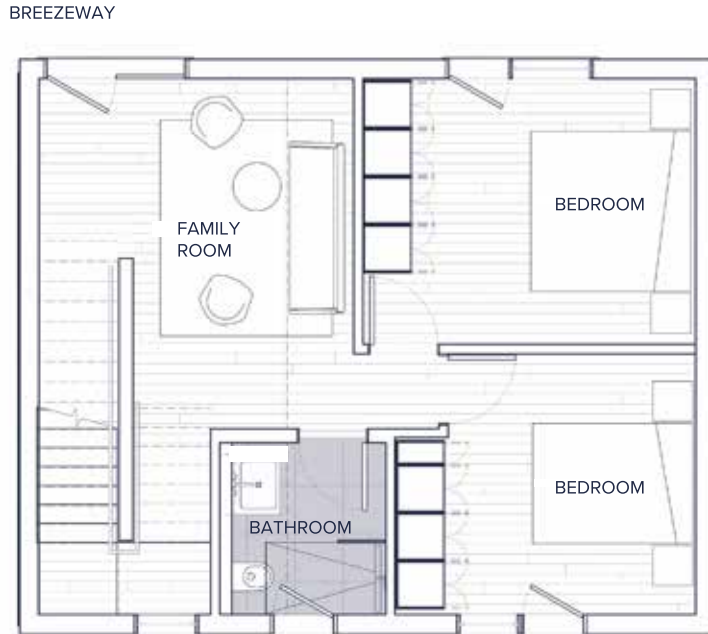
2 BED + DEN | 1.5 BATH  
PLUS SECOND FLOOR FLEX SPACE

INTERIOR	1495 SQ FT
EXTERIOR	160 SQ FT
TOTAL	1655 SQ FT

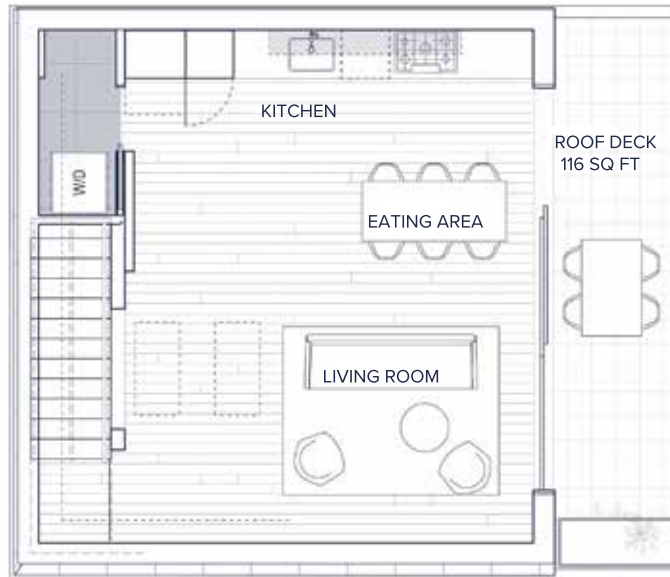
## GROUND FLOOR



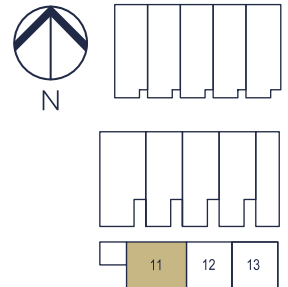
## SECOND FLOOR



## THIRD FLOOR



## THE WAREHOUSE



Dimensions, sizes, specifications, layouts and materials are approximate only and subject to change without notice. E&OE.



# UNIT 12 + 13

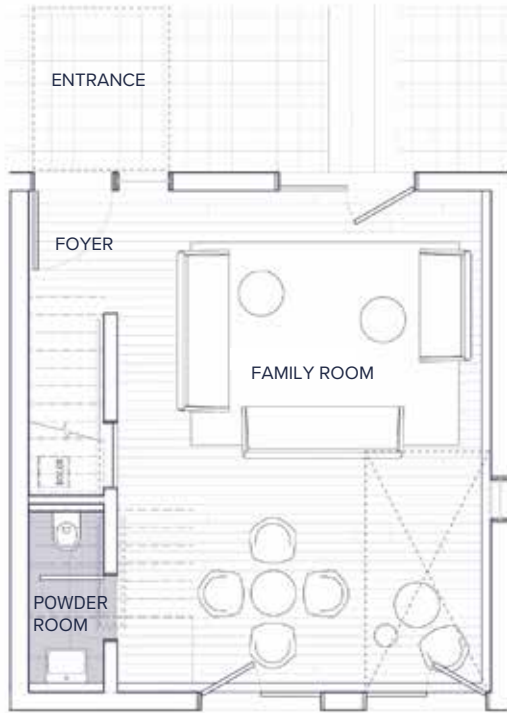
1 BED | 1.5 BATH

PLUS MAIN FLOOR FLEX SPACE

12 INTERIOR	1358 SQ FT
EXTERIOR	160 SQ FT
TOTAL	1518 SQ FT

13 INTERIOR	1365 SQ FT
EXTERIOR	168 SQ FT
TOTAL	1533 SQ FT

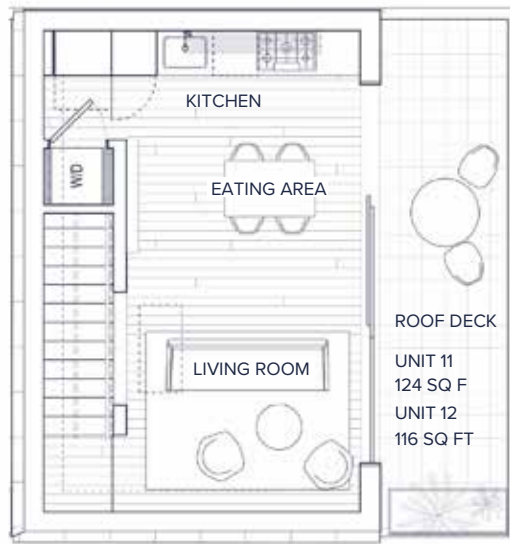
## GROUND FLOOR



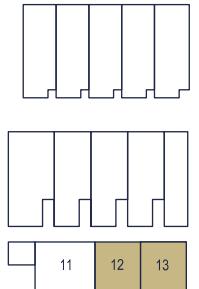
## SECOND FLOOR



## THIRD FLOOR



## THE WAREHOUSE



Dimensions, sizes, specifications, layouts and materials are approximate only and subject to change without notice. E&OE.